

1. Identification

Catalogue Number

B447292

Lot Number

6-DRR-189-5

Product Name

Bisphenol AF-13C12

Synonyms

4,4'-[2,2,2-Trifluoro-1-(trifluoromethyl)ethylidene]bisphenol-13C12; 4,4'-[2,2,2-trifluoro-1-(trifluoromethyl)ethylidene]di-phenol-13C12; 4,4'-[Trifluoro-1-(trifluoromethyl)ethylidene]diphenol-13C12; 1,1,1,3,3,3-Hexafluoro-2,2-bis(4-hydroxyphenyl)propane-13C12; 2,2-(4-Hydroxyphenyl)hexafluoropropane-13C12; 2,2-Bis(4-hydroxyphenyl)-1,1,1,3,3,3-hexafluoropropane-13C12; 2,2-Bis(4-

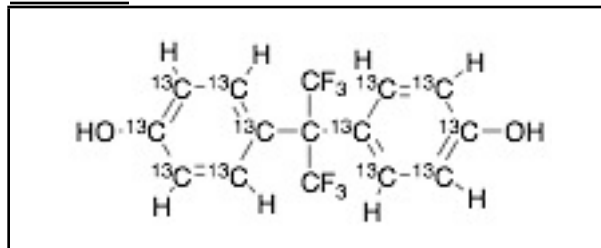
CAS Number

N/A

Solubility

DMSO (Slightly), Methanol (Slightly)

Structure



Shipping Condition

This Product Is Stable To Be Shipped At Room Temperature

Molecular Formula

C₃¹³C₁₂H₁₀F₆O₂

Source of Product

Synthetic

Long Term Storage Conditions

4°C

Molecular Weight

348.14

Purity

>95%

2. Warnings

Not Determined

3. Analytical Information

<u>Tests</u>	<u>Specifications</u>	<u>Results</u>
Appearance	Pale Orange to Light Grey Solid	Pale Orange to Pale Red Solid
NMR	Conforms to Structure	Conforms
F NMR	Conforms to Structure	Conforms
HPLC Purity	>95%	99.22% (230 nm)
MS	Conforms to Structure	Conforms
Isotopic Purity	>95%	99.0%



Additional Information

Normalized Intensity: ¹³C₀ = 0.00%, ¹³C₁ = 0.00%, ¹³C₂ = 0.00%, ¹³C₃ = 0.00%, ¹³C₄ = 0.00%, ¹³C₅ = 0.00%, ¹³C₆ = 0.00%, ¹³C₇ = 0.00%, ¹³C₈ = 0.00%, ¹³C₉ = 0.04%, ¹³C₁₀ = 0.54%, ¹³C₁₁ = 10.39%, ¹³C₁₂ = 89.02%

Purity is based on the analytical results of the tests performed. NMR and Elemental Analysis (if available) may have an accuracy of ± 2%. Isotopic purity is based on mass distribution observed.

The contents of the specifications are subject to change without advance notice, and the specification values displayed here are the most up to date values.

4. Signatures

<u>Reviewed by</u>	<u>Reviewed by</u>	<u>C of A Approved by</u>	<u>Test Date</u>	<u>Retest Date</u>
			8/8/2025	8/6/2029
Vijaya Annapareddy	Toni Rantanen	Nicole Badiali		
Product Quality Specialist	Manager, Quality Assurance	Quality Assurance Associate		